

# GYSMATIC TRUE COLOR [XL]



ART.037908

Essential for safety, the GYSMATIC TRUE COLOR XL optoelectronic hood protects the welder's face and eyes from UV, infrared and splashes. Fully automatic, the mask switches from clear to tinted state in a fraction of a second as soon as it is primed. Comes with a headband, it frees the welder's hands and offers all the necessary comfort for welding work.

## CHARACTERISTICS

- Optimum visibility: XL screen
- High sensitivity thanks to 4 sensors
- TIG welding > 2A
- Active filter : shades 5-9 / 9-13
- Range 5-9 : special low intensity
- Choice of 7 dark shades ( 5>13) to suit all your operations welding and cutting.
- TRUE COLOR technology



Standard LCD-screen

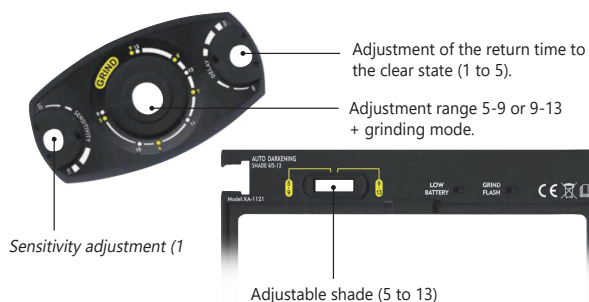


True color LCD Technologie



## TECHNICAL DATA

Protection UV/IR	DIN 15
Classification	1/1/1/1
Clear shade	4
Dark shade	5-9 / 9-13
Reaction time	0,08 ms
Time to return to clear state	0,1 à 0,9 sec
Field vision	100 x 60 mm
Power supply	solaire + 2 piles (CR2450)
Weight	590 g
Settings	Sensitivity, delay, shade, grind , memory
Light sensor	4
Applications	MMA 5>400 / TIG 2>250 / MIG-MAG 5>400
Standards	CE / EN 175B / EN 166 / EN 379



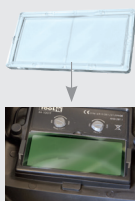
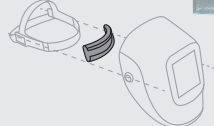
## OPTIONS

Carry bag for helmet welding  
043299



Antiperspirant - headband

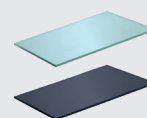
043466  
x2



zoom x2

Magnifying glass  
for Zeus, Spaceview,  
Ergotech & Alien  
True Color  
x1 042780

## Lenses



110 x 90 (x10)	106 x 66 (x10)
040816	043886